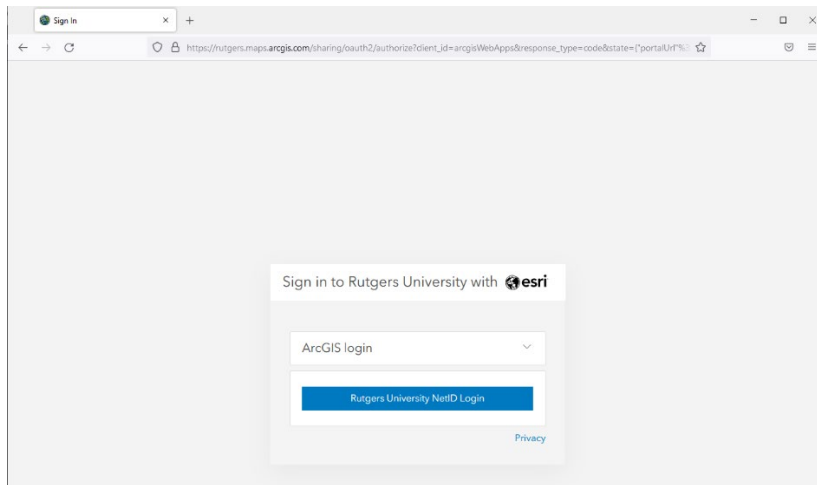


1. To access the data through the MapViewer, first access the Web Map.

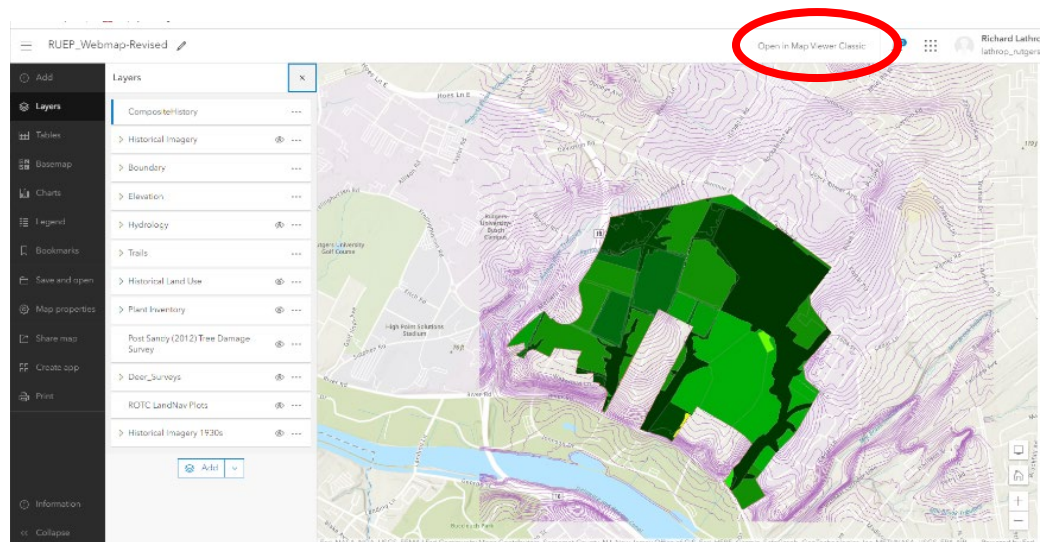
Here's the RU go link to the Rutgers EcoPreserve Web Map :

<https://go.rutgers.edu/ruecopreserve>

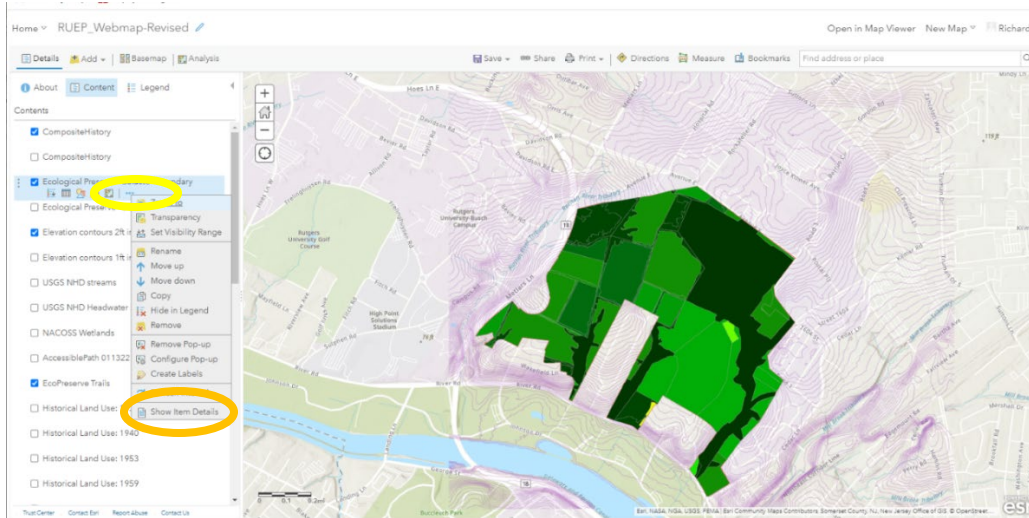
Folks should be able to access through their Rutgers NetID Login



2. Switch to **Map Viewer Classic** - upper right (Red ellipse)



- Highlight the layer of interest. Click the **3 dots - More options** (Yellow ellipse). Then select **Show Item Details** (Orange ellipse).



- Then **Open in ArcGIS Desktop** or scroll down to copy the URL link for the web map services.

